



AIR TRAP

MODEL JA3 DUCTILE CAST IRON

Features

Free float automatic liquid drain for air systems.

1. Only one moving part, the free float, eliminates concentrated valve wear, ensuring a long service life.
2. Air tight seal even under low-load conditions.
3. Manual blow down device fitted as standard to facilitate cleaning in case of accumulation from oil or dirt.



Specifications

Model	JA3	
Connection	Screwed	
Size	1/2", 3/4", 1"	
Maximum Operating Pressure (barg)	PMO	16
Maximum Operating Temperature (°C)	TMO	100

PRESSURE SHELL DESIGN CONDITIONS (**NOT** OPERATING CONDITIONS): Maximum Allowable Pressure (barg) PMA: 21
Maximum Allowable Temperature (°C) TMA: 100

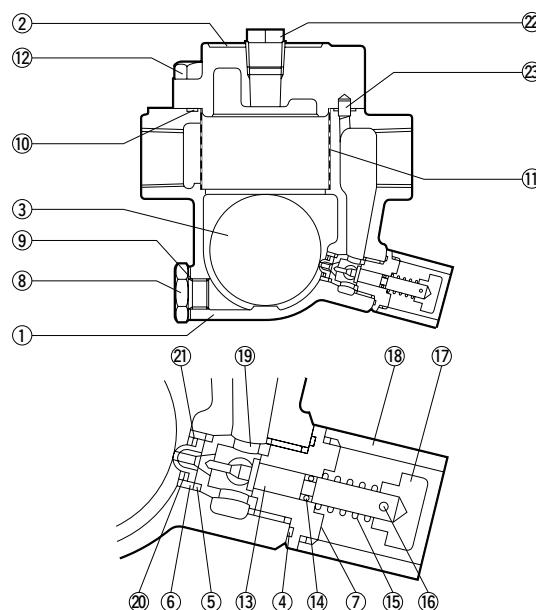
1 bar = 0.1 MPa



To avoid abnormal operation, accidents or serious injury, DO NOT use this product outside of the specification range. Local regulations may restrict the use of this product to below the conditions quoted.

No.	Description	Material*	DIN	ASTM/AISI
①	Body	Ductile Cast Iron GGG-40	0.7040	A536 Gr. 60-40-18
②	Cover	Ductile Cast Iron GGG-40	0.7040	A536 Gr. 60-40-18
③	Float	Stainless Steel SUS316L	1.4404	AISI316L
④	Gasket	Fluorine Resin PTFE	PTFE	PTFE
⑤	Valve Seat O-Ring	Nitrile Rubber NBR	—	D2000BF
⑥	Valve Seat	Nitrile Rubber NBR	—	D2000BF
⑦	Valve Seat Holder Nut	Stainless Steel SUS420F	1.4028	AISI420F
⑧	Drain Plug	Carbon Steel S25C	1.1158	AISI1025
⑨	Drain Plug Gasket	Soft Iron SUYP	1.1121	AISI1010
⑩	Cover Gasket	Fluorine Resin PTFE	PTFE	PTFE
⑪	Screen	Stainless Steel SUS430	1.4016	AISI430
⑫	Cover Bolt	Carbon Steel S45C	1.0503	AISI1045
⑬	Cleaning Pin	Stainless Steel SUS420F	1.4028	AISI420F
⑭	O-Ring	Nitrile Rubber NBR	—	D2000BF
⑮	Coil Spring	Stainless Steel SUS304	1.4301	AISI304
⑯	Split Pin	Stainless Steel SUS403	1.4000	AISI403
⑰	Plunger	Stainless Steel SUS420F	1.4028	AISI420F
⑱	Guard Bushing	Carbon Steel SGP	1.0035	A53 Type F
⑲	Valve Seat Holder	Stainless Steel SUS420F	1.4028	AISI420F
⑳	Snap Ring	Stainless Steel SUS304	1.4301	AISI304
㉑	Washer	Stainless Steel SUS304	1.4301	AISI304
㉒	Balancing Plug	Carbon Steel SS400	1.0037	A6
㉓	Alignment Pin	High-Cr Bearing Steel SUJ2	1.2067	A485

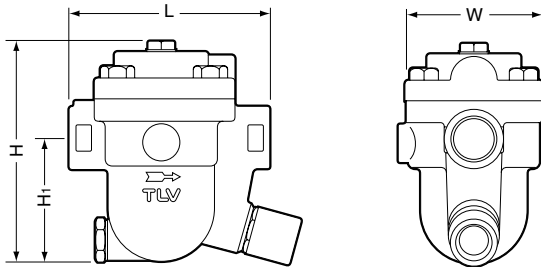
* Equivalent materials



Copyright © TLV

Dimensions

● JA3 Screwed



JA3 Screwed*

(mm)

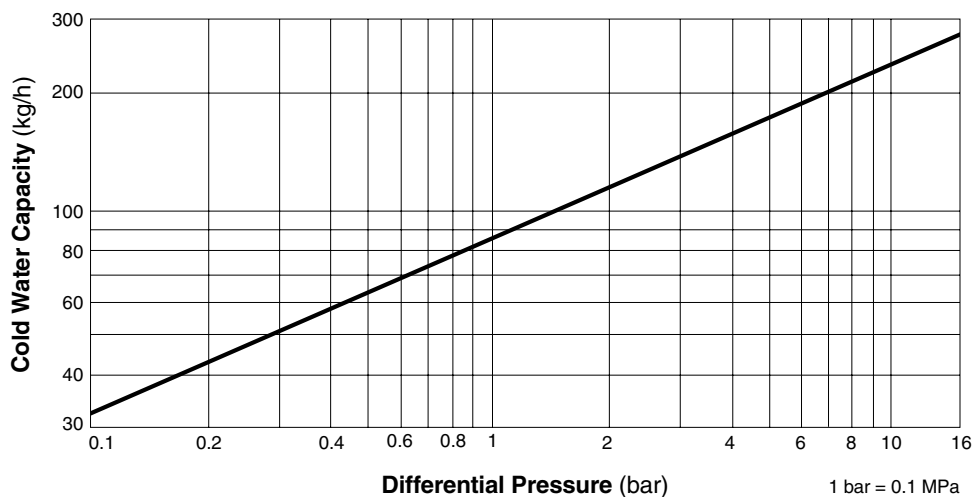
Size	L	H	H ₁	W	Weight (kg)
1/2"	120	130	75	80	2.7
3/4"			73		2.8
1"		137	75		3

* BSP DIN 2999, other standards available

NOTE

A pressure-balancing line must be connected to the air system from the balancing port at the top of the trap to a place above any possible condensate accumulation in the system.

Discharge Capacity



1. Differential pressure is the difference between the inlet and outlet pressure of the trap.
2. The chart is applicable to condensate below 100 °C.
3. The discharge capacity is for a liquid with specific gravity of 1.
4. Recommended safety factor: at least 1.5.



DO NOT use traps under conditions that exceed maximum differential pressure, as condensate backup will occur!

Manufacturer

ISO 9001/ISO 14001

TLV® CO., LTD.
Kakogawa, Japan
is approved by LRQA Ltd. to ISO 9001/14001

